

Photo by Marcy Mahr

Toad Watch 2026



Reanne Harvey
Wildsight Revelstoke Branch Manager



wildsight
Revelstoke

Photo by Marcy Mahr



Transformation Superpower

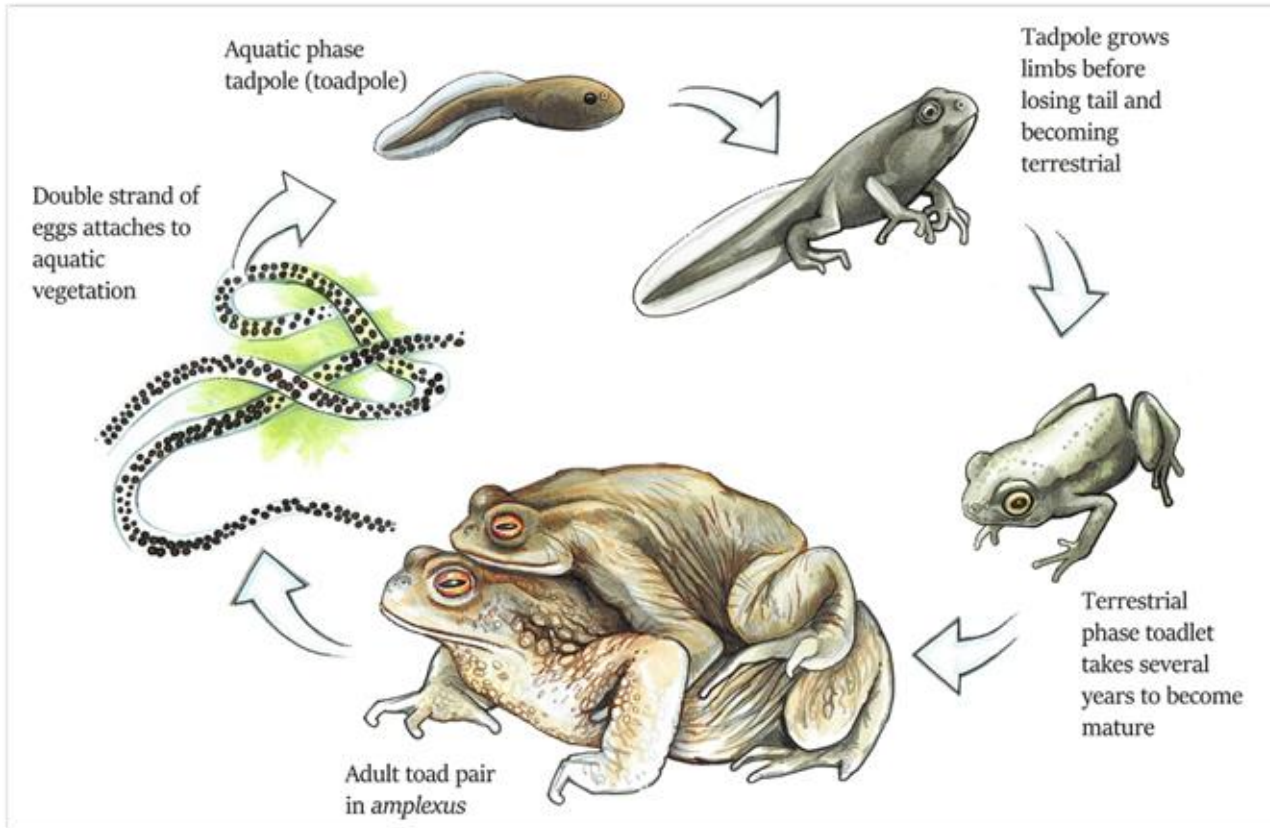


Photo by Marcy Mahr



Photo by Marcy Mahr



Photo by Marcy Mahr



Photo by Marcy Mahr





Photo by Marcy Mahr

Toad life cycle in Revelstoke

Breeding & Egg Laying:
Late April → Late May



Tadpoles: Late May → Early
July



Toadlets: Early July → August



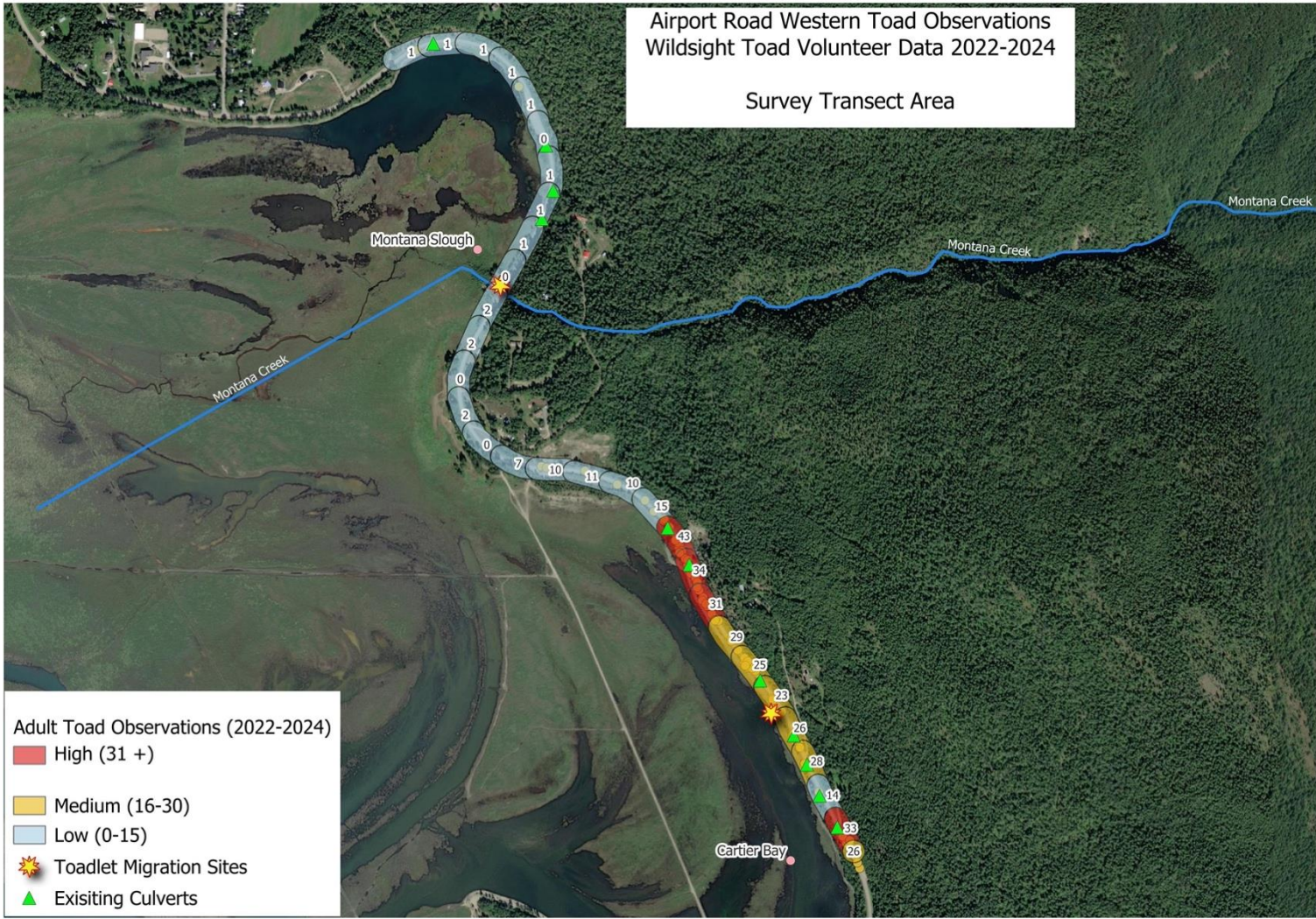
Western Toads: Yellow List Special Concern

- Road mortality
- Loss of wetlands and other habitat from development
- Changing climate
- Invasive species



Airport Road Western Toad Observations
Wildsight Toad Volunteer Data 2022-2024

Survey Transect Area



Adult Toad Observations (2022-2024)

High (31 +)

Medium (16-30)

Low (0-15)

Toadlet Migration Sites

Existing Culverts

New Culverts!

- Two new culverts installed along Airport Way
- With thanks to the Ministry of Transportation and Transit and ICBC
- Located in areas of high toadlet traffic, identified through Toad Watch data
- Require improvements to be fully usable



ISO: Volunteer Toad Angels

- Looking for volunteers to survey for adult toads migrating across Airport Way
- Surveys begin after dark (around 8:45-9pm)
- Short distance: 6 mile to Cartier Trailhead
- Longer distance: Catherwood Road to Cartier Trailhead
- Can walk, bike, skate
- Groups of 3+
- Must sign [waiver](#) and follow safety protocol
- Require a smart phone to download the Gaia app
- [Sign up](#) using our google sheet
- You could come 1 night or as many as you like!
- No prior experience required
- Record all the toads you see! (remember to check inside the culverts)



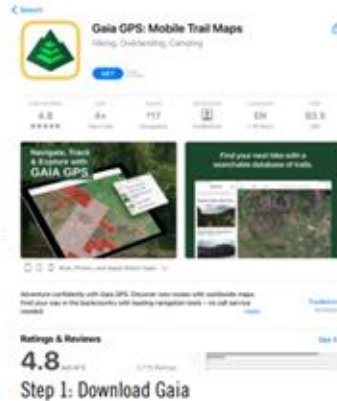


Toad Watch Tutorial: How to Record Data Using Gaia GPS

Your data matters. Help us #stopthesquish and join Revelstoke's Toad Watch today!

Part 1: Get Started on Gaia

1. Before heading out for surveys, download the FREE version of Gaia GPS app onto your phone.
2. Create a Gaia GPS account using your email address.
3. Login to Gaia GPS.
4. Look for Western Toads along Airport Way between designated areas. When making observations, determine the vitality status and sex of the toad(s) - view **page 10** for tips. Are they alive or dead, female, male or unknown?
5. Open the Gaia app once a toad has been spotted and select "Map" on the bottom, left side of the screen.
6. Record toad locations by adding Waypoints. To add Waypoints, press the small plus sign at the top of the screen.



- [Download the free Gaia app](#)
- Create an account or login
- When you observe a toad, add a waypoint (Male or Female, Alive or Dead, Direction of travel)
- No observations – let us know!
- Add all waypoints to a folder e.g. **Toad-Watch-07-04-2026**
- Export the folder and share with revelstoke@wildsight.ca

Staying safe

- Sign our [waiver](#) (link on website)
- Do not go out on your own (groups of 3+ are preferred)
- Share location with a friend or family member
- Wear a high vis jacket and headlamp
- Bring bear spray!
- Dress for the weather



Sign me up!

Toad Watch 2026 Sign-Up Sheet

File Edit View Insert Format Data Tools Extensions Help

100% 123 Default... 10 B I A

	A	B	C	D	E	F	G
1	April 2026						
2	Monday	Tuesday	Wednesday	Thursday	Friday	Saturday	Sunday
3			1	2	3	4	5
4							
5	6	7	8	9	10	11	12
6		Training evening with Wildsight - meet at 8:30pm at the 6-mile pullout					
7	13	14	15	16	17	18	19
8		Training evening with Wildsight - meet at 8:30pm at the 6-mile pullout					
9	20	21	22	23	24	25	26
10							
11	27	28	29	30			

Please include your contact info if you are open to another volunteer joining you.

Training nights

Tuesday April 7th and 14th at 8:30pm

6-mile pull-out

**Please sign the waiver and download
the GAIA GPS app before you arrive**



GAIA GPS

What will I get out of this?

- Training on how to identify and sex toads
- Learn to use a mapping app
- Meet other toad lovers
- Help a species at risk in your backyard
 - the data we collect is helping to inform management measures
- A patch!



Photo by Marcy Mahr

Questions?

