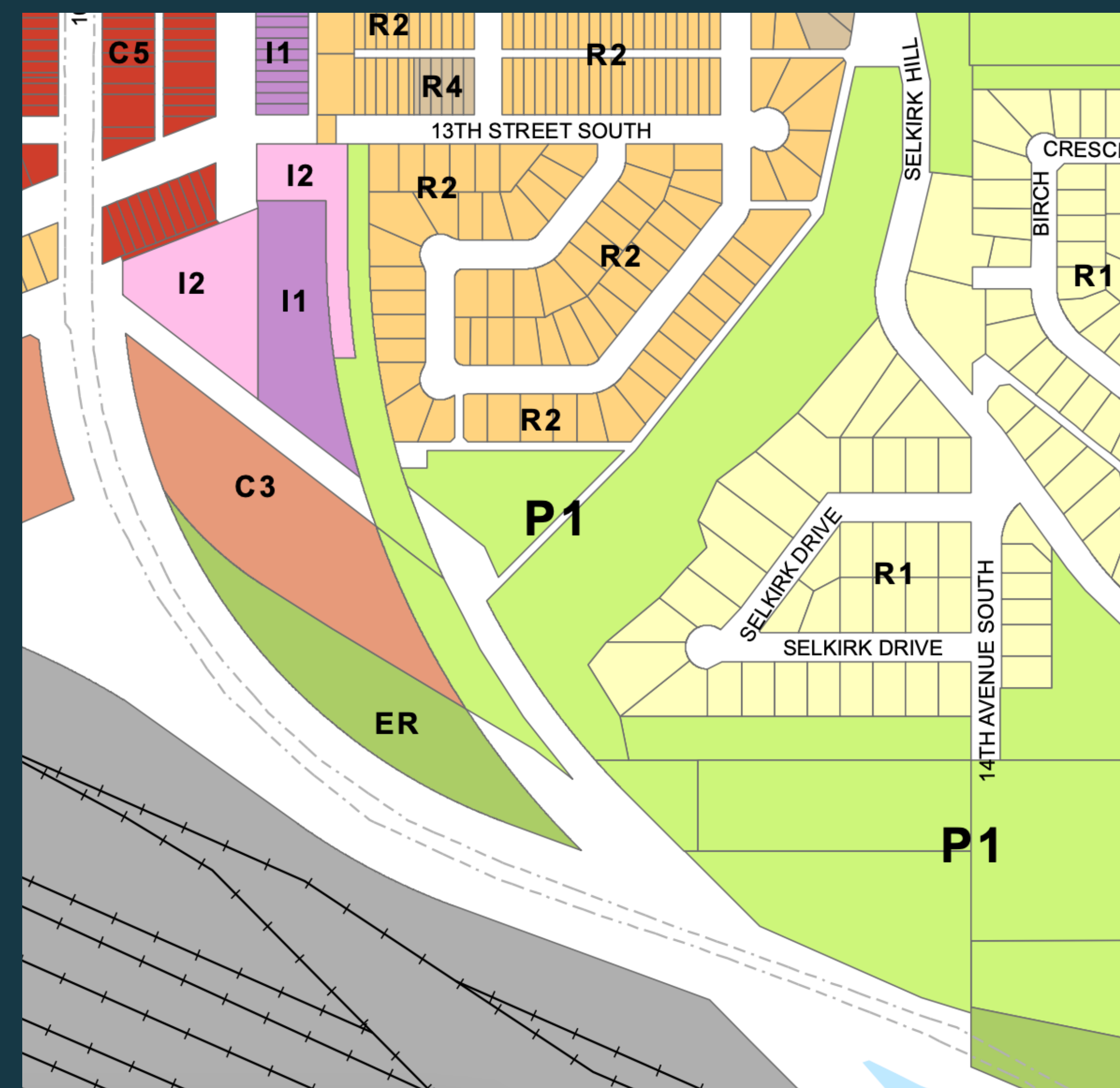
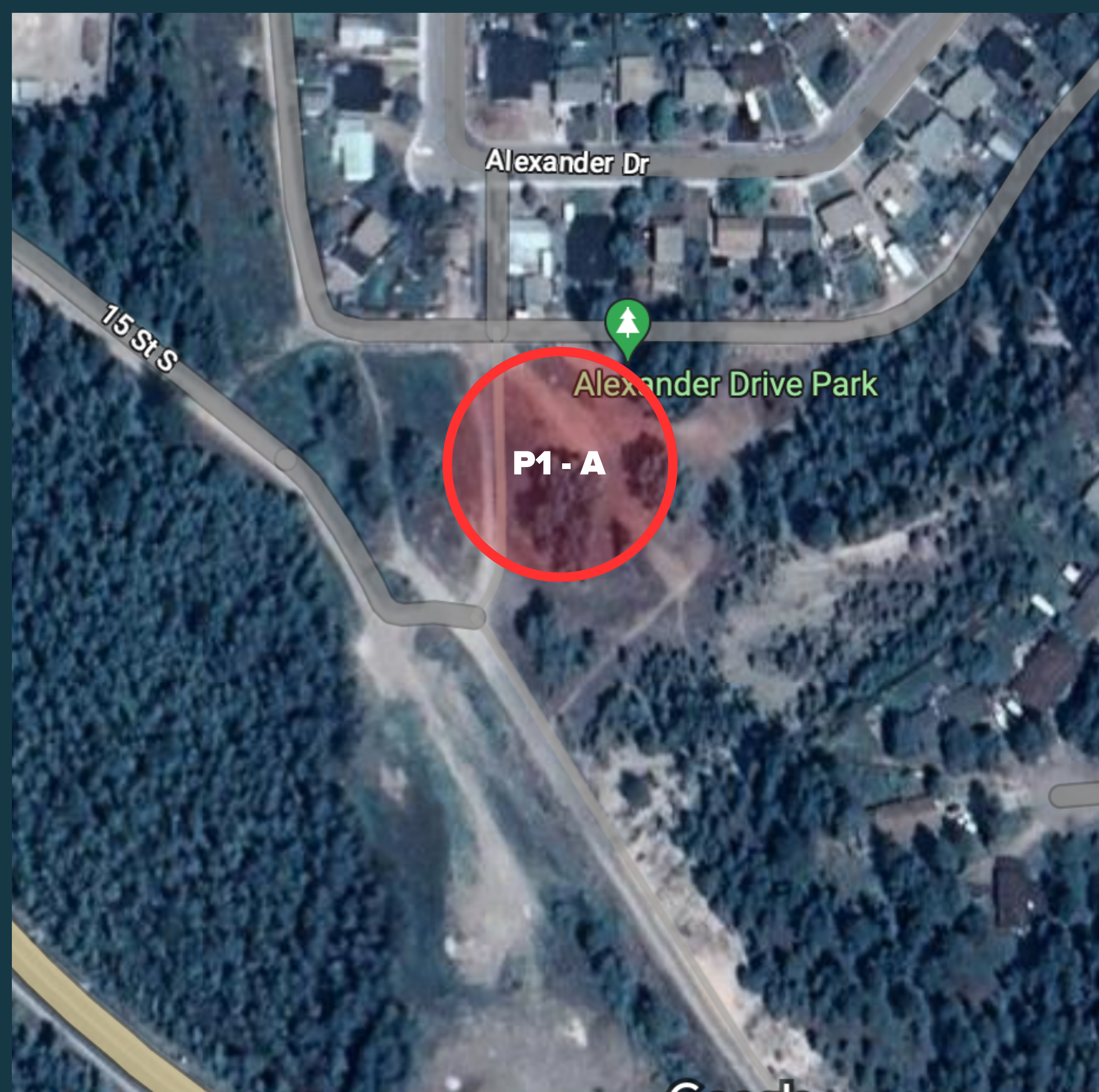


# P1 - A - Alexander Park

**Zoning:**  
**P1, Parks and Trails**  
**Parks, Recreation & Environment**





## P1 - A - Alexander Park



P1 - A -  
South view  
from  
laneway



P1 - A -  
South  
easterly  
view from  
laneway





## P1 - A - Alexander Park

### Zoning:

**P1, Parks and Trails**

**Parks, Recreation & Environment**

Distance from Golden centre: **500m**

Walking time: **7 minutes**

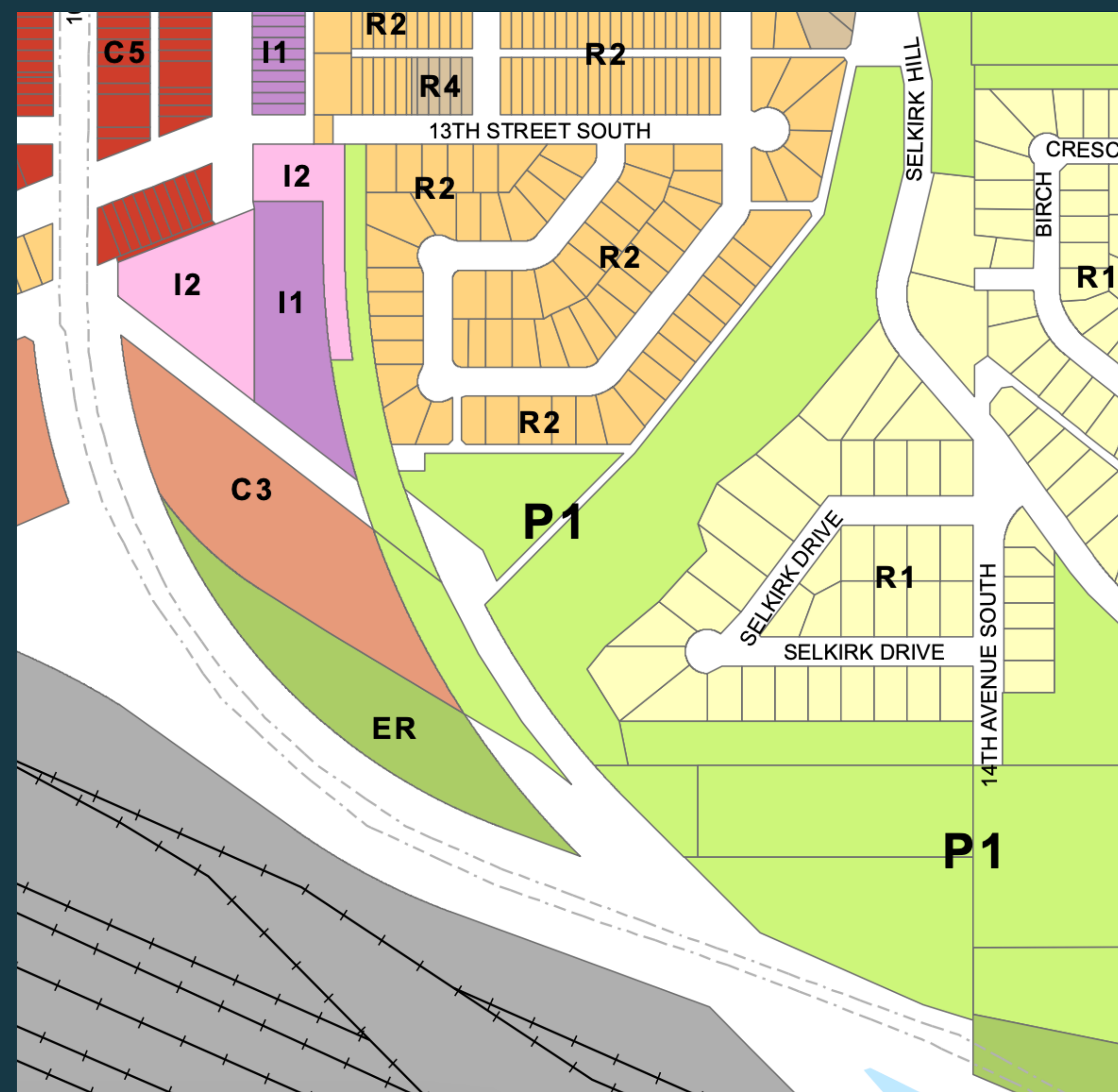
Drive time: **1 minutes**

### Benefits

- Existing park zone
- Meets criteria for town development goals & active transportation plan
- Close to other attractions
- Large potential area for use
- Already identified as 'needing care'

### Constraints

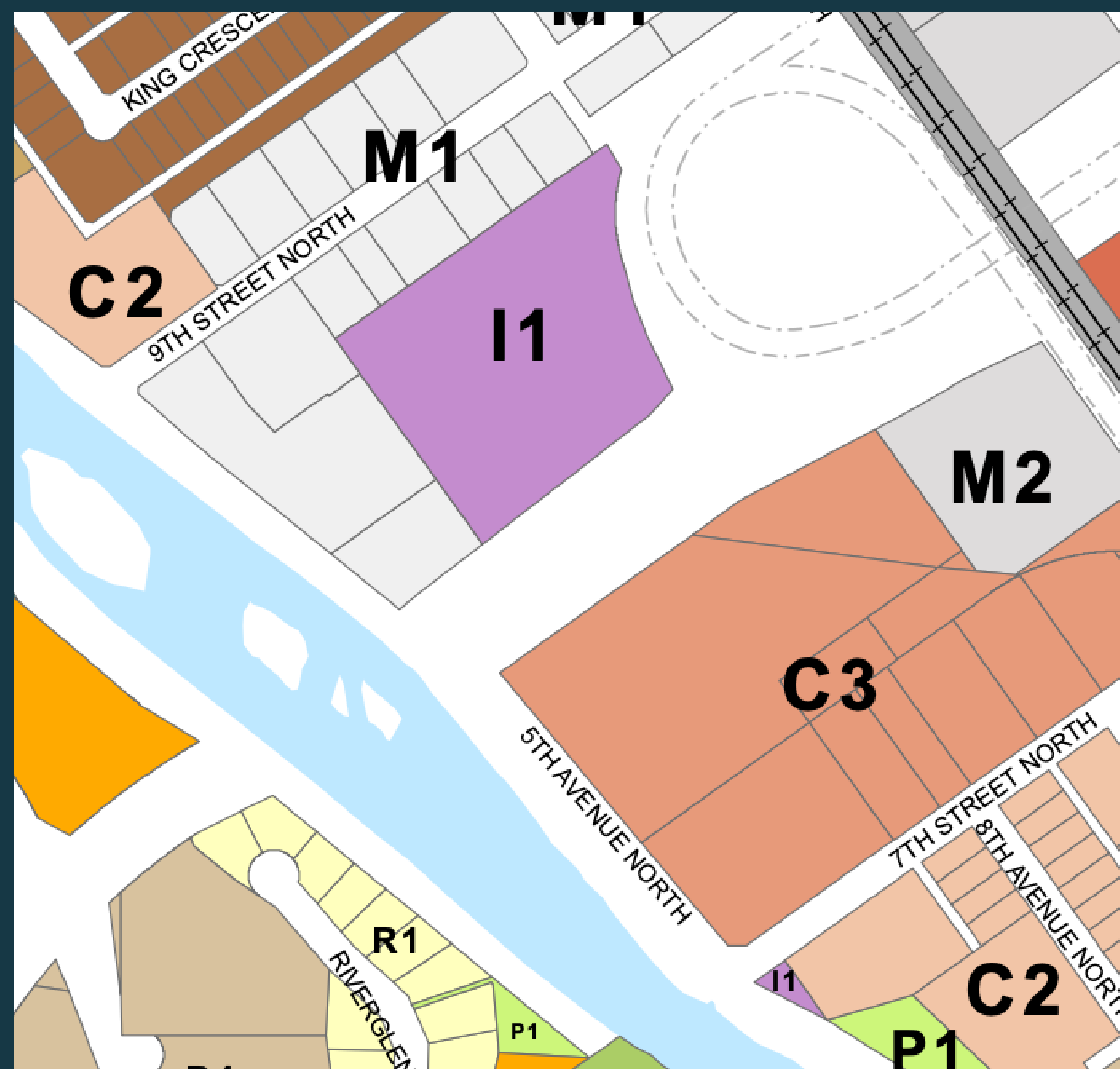
- Parking currently limited
- Within main town flood hazard area





# I1 - C - 9th St North

**Zoning:**  
**I1, Community**  
**Community Utilities and Services**

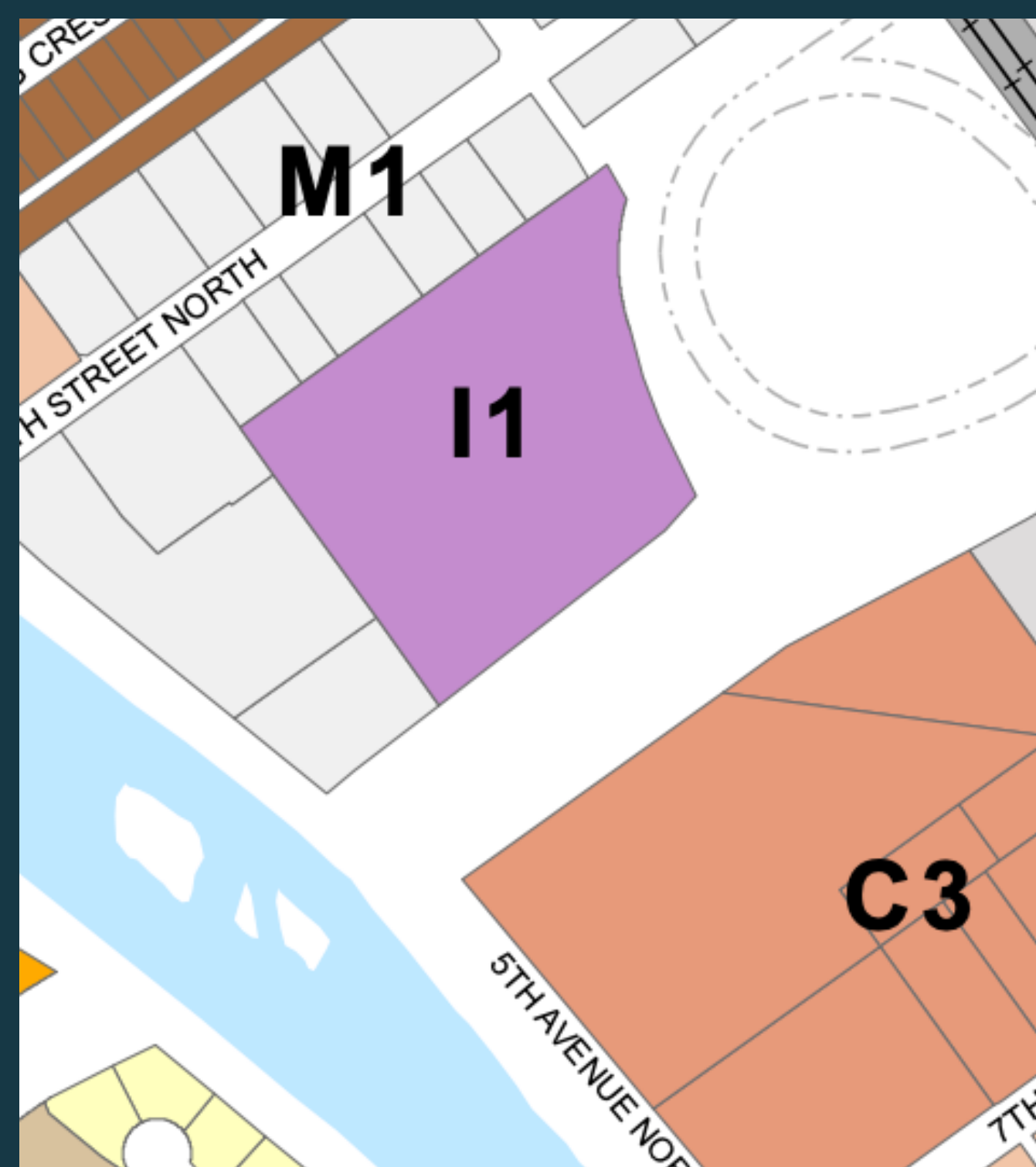




## I1 - C - 9th St North



I1 - C South  
west view  
from ramp





## I1 - C - 9th St North

### Zoning:

**I1, Community**

**Community Utilities and Services**

Distance from Golden centre: **1.5km**

Walking time: **21 minutes**

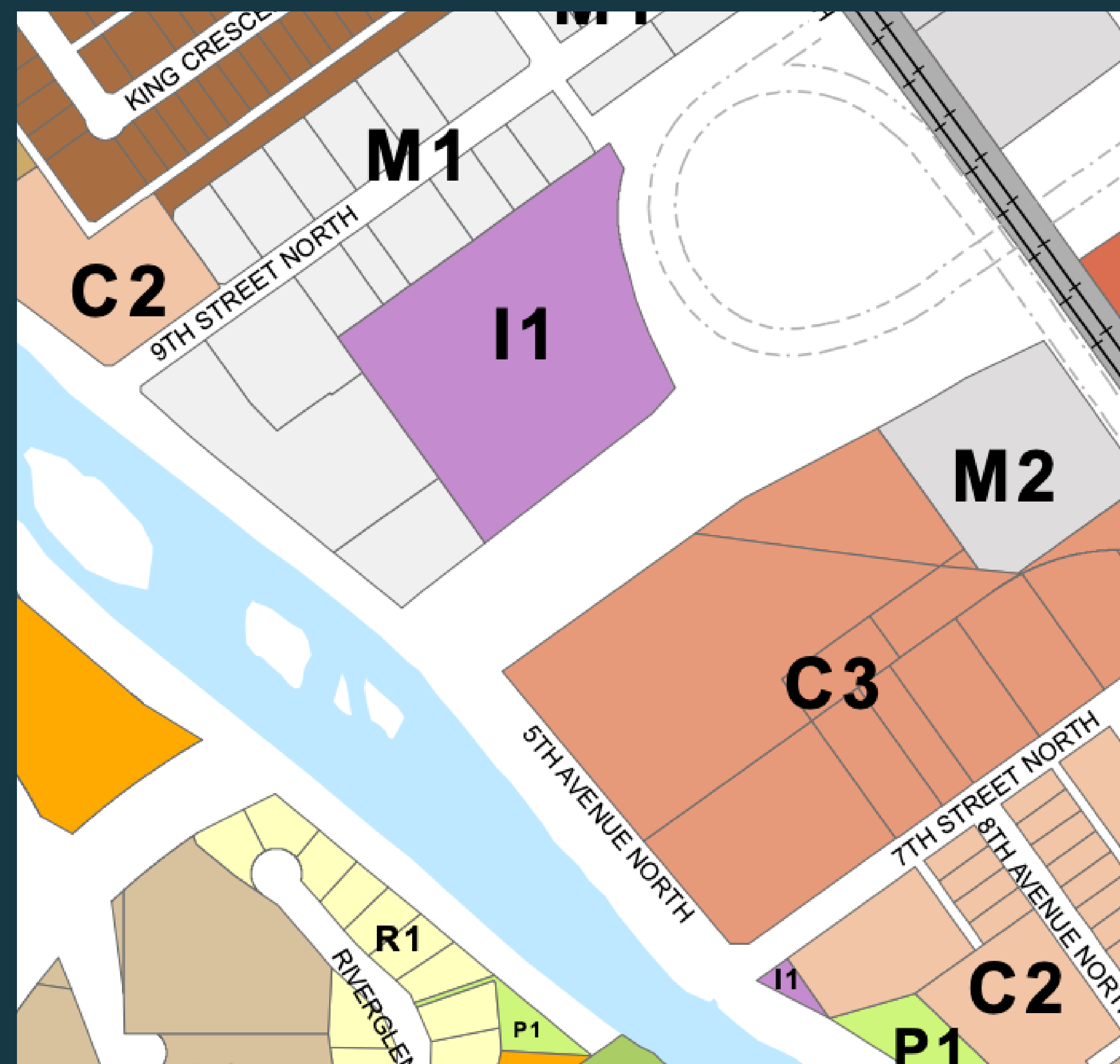
Drive time: **2 minutes**

### Benefits

- Large area
- Meets criteria for town development goals & active transportation plan
- Parking close by
- Close proximity to diverse groups of potential users
- No hazard zone

### Constraints

- Wildlife corridor
- Distance from centre of town
- Less accessible for senior community





# **Locations: Initial trail concept**